

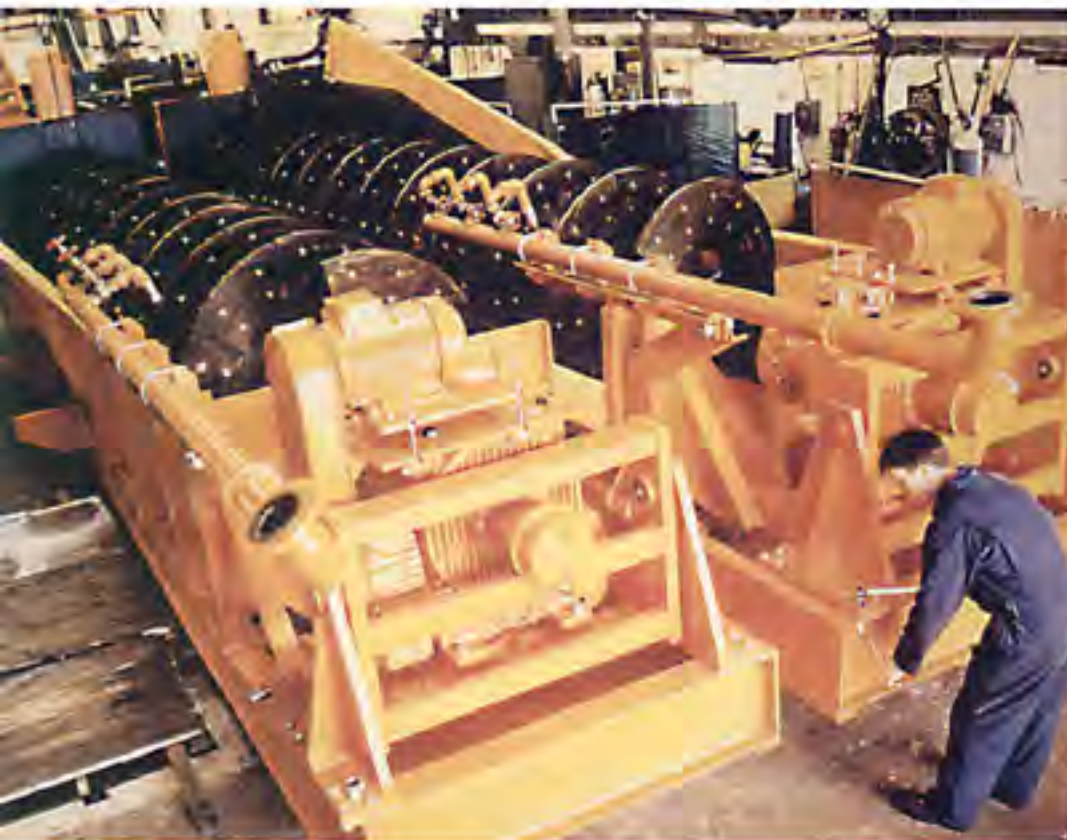
Svedala Spiral Classifiers



Several Applications

The wet classifier may perform several applications

- Separation of fine particles and liquid from coarse particles
- Separation of light particles from heavy particles
- Separation of the particles into a number of products graded according to size
- Separation of liquid from solid particles
- Optimal particle size range 800 to 75 microns



Final assembly of dia 1500 mm spiral classifiers.

Heavy Duty Rugged Construction

The tank is a rigid, well supported unit of continuous, welded construction. A minimum of intermediate foundation supports are required.

Spirals are supplied in sizes from 300 mm up to 2200 mm diameter. Pre-formed, sectionalised steel flights from a continuous spiral helix.

Available in single and double pitch configuration, single or duplex.

Abrasion-resistant, replaceable shoes protect the working face of the flights from wear.

Polyurethane shoes are standard. Chrome iron and Ni-hard are available as options.

Tank Designs for Optimal Performance

These classifiers are designed to provide the most effective pool area and overflow velocity requirements. By combining the proper submergence of the spiral with one of the tank designs a choice of 63 combinations is possible in Straight, Modified or Full flare options.

The proper combination of pool depth, area and spiral construction is important to secure a controlled turbulence in the slurry flow for accurate size separation.

Easy to Operate and Maintain

The classifier spiral is easily raised for start-ups, shut-downs and periodic inspections or maintenance. For the smaller units, up to 900 mm diameter, a handwheel-operated screw device is standard.

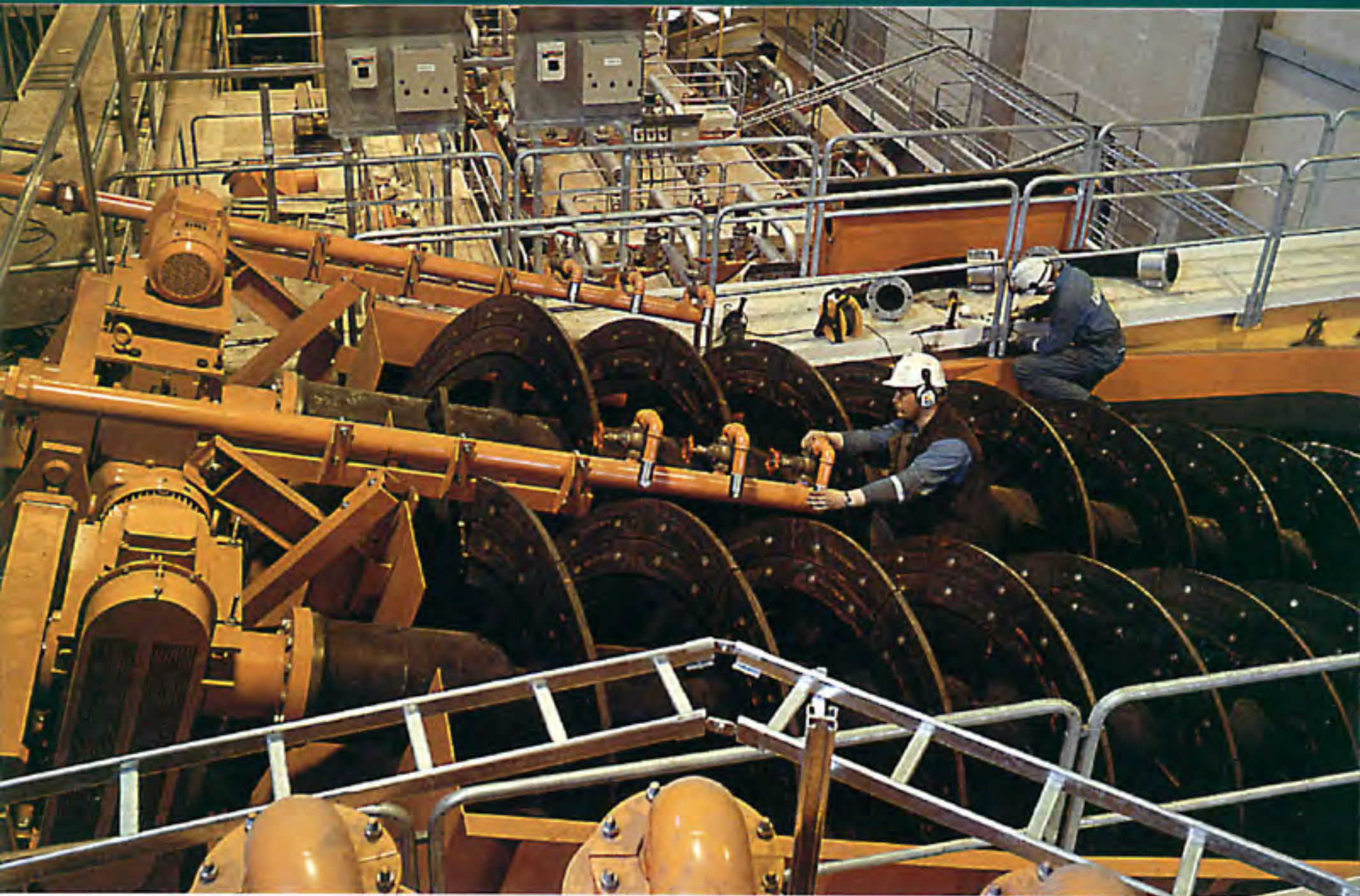
For the larger machines the spiral assembly is raised and lowered by an electro-mechanical lifting device.

The overflow weir, which varies the spiral submergence and pool area consists of removable weir bars located in a guide channel at the overflow end.

The drive unit and the submersible bearing of the spiral, the two critical parts of the machine are designed for hard continuous operating conditions. An optimal lubrication system, automatic as option, is securing the function of these vital part.

Service and maintenance of these parts and the wear parts of the spiral is simple to carry out.

Product Presentation



Spiral classifier in grinding circuit (duplex, double pitch).



Gas sealed spiral classifiers.