



Case Study - Commercial Cooling Tower - Scale and Bio (6 week evaluation)

Location:	<i>Wyndham Office Building Whippany, New Jersey</i>	Date of First Inspection:	<i>April 6, 2012</i>
Application:	<i>Cooling tower</i>	Date of Second Inspection:	<i>April 26, 2012</i>
Purpose of Installation:	<i>1) Prevention of limescale accumulation. 2) Removal of existing limescale deposits. 3) Eradication of bacteria and algae growth.</i>		
Installation Date:	<i>March 14, 2012</i>		

Installation Details

Water conditioner model	<i>HydroFLOW Custom 12" i Range water conditioning device</i>
Pipe Outer Diameter	<i>10.8 inches</i>
Pipe Material	<i>Iron</i>
Installation location	<i>Prior to cooling tower cells</i>

Overview

Limescale has accumulated on the cooling tower honeycomb fills, louvers and infrastructure even though the water throughout the building is treated by a traditional salt softening system and chemicals. Chemical services are provided by an outside chemical company.

Trial method:

1. Monitor the effect of Hydropath technology on the prevention of limescale accumulation.
2. Monitor the effect of Hydropath technology on the removal of limescale.
3. Monitor the effect of Hydropath technology on bio-film eradication.

Expected results:

1. Over time, limescale will begin to dissolved from the honeycomb fills, louvers and portions of the infrastructure where the treated recirculating water comes in contact with.
2. Limescale will not accumulate on the above mentioned areas of the cooling tower.
3. Once surfaces are cleaned, bio-film deposits will remain within control parameters.
4. Once positive progress is achieved, some chemicals can be reduced or discontinued without any negative effects.

Picture of the *HydroFLOW 12" i Range* device



Installed device

Pictures of existing and current conditions after 6 weeks



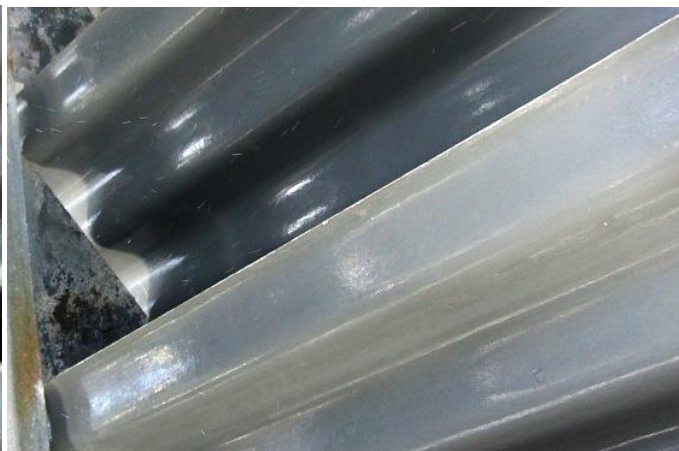
Without *HydroFLOW*



With *HydroFLOW*



Without *HydroFLOW*



With *HydroFLOW*



Without *HydroFLOW*



With *HydroFLOW*



Without *HydroFLOW*



With *HydroFLOW*



Results after 6 weeks

- Limescale stopped accumulating as soon as the *HydroFLOW* device was turned on.
- Existing limescale was dissolved over time.
- New bio-film did not reappear and sump tank water is no longer murky and foamy.

Conclusion

HydroPath technology can be recommended as a chemical-free method to remove and prevent scaling and bio-film on cooling towers.

Referral Information

Please contact Mauro Appezzato of Jersey Water Solutions in order to receive the customer's contact information.

Phone: 732-719-1977

Email: mappezzato@jerseywatersolutions.com

Website: www.jerseywatersolutions.com