



CORNELL PUMP COMPANY

MX SERIES

HIGH HEAD MINING PUMPS



EFFICIENT BY DESIGN



MX SERIES PUMPS - MINING

CORNELL'S NEW MX SERIES HIGH HEAD MINING PUMPS BEAT THE COMPETITION HANDS DOWN IN EFFICIENCY AND PERFORMANCE!

APPLICATION

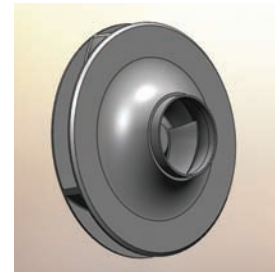
Cornell has incorporated many unique and innovative design features into its mining pumps, while maintaining its position in the industry as the leader of heavy-duty, low maintenance units. Cornell's mining pumps have been used successfully in a variety of mining and dewatering applications. The MX Series is designed specifically to handle high head applications while providing a long service life.

PRODUCT DIVERSITY

Many Cornell innovations have evolved from our commitment to the mining market and our ongoing effort to work with the industry in providing solutions for mining and dewatering applications.

- High Operating Pressures
- High Flow Requirements
- High Efficiency
- Dependable, High Quality Construction - CA6NM Impeller is standard

ENCLOSED IMPELLERS

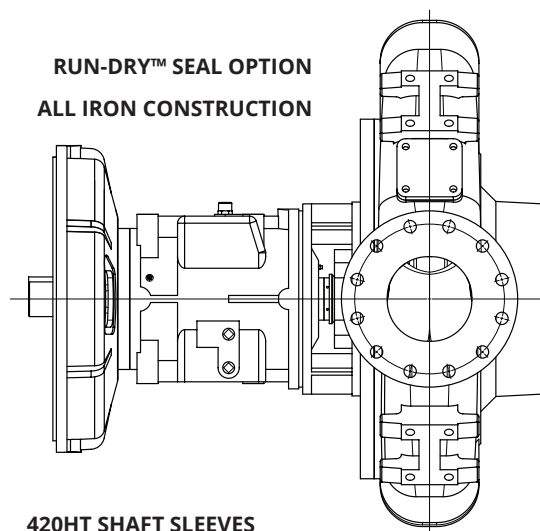


The new high head pumps have 3 or 4 vane enclosed impellers designed to handle solids up to 2.38" and have excellent efficiencies - up to 75%.

DOUBLE ANGULAR
CONTACT THRUST
BEARINGS

17-4 pH
STAINLESS
STEEL

OIL FILLED OR GREASE
LUBRICATED FRAMES



RUN-DRY™ SEAL OPTION
ALL IRON CONSTRUCTION

420HT SHAFT SLEEVES
AVAILABLE FOR
ABRASIVE APPLICATIONS

DYNAMICALLY
BALANCED IMPELLERS

300LB RATED FLANGES

DUCTILE IRON CASE,
CA6NM IMPELLER

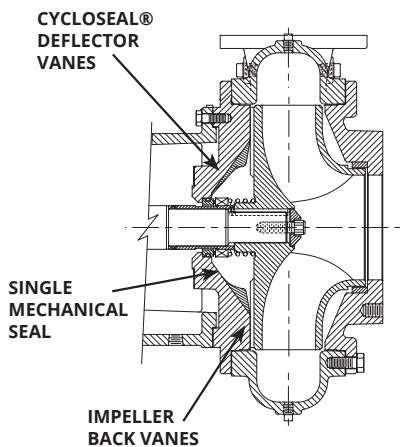
IMPELLER WEAR RING
OPTIONALLY HARDENED TO
375-425 BHN VOLUTE WEAR
RING OPTIONALLY HARDENED
TO 450-500 BHN

MECHANICAL SEAL
TUNGSTEN CARBIDE
(T1 OR T2) VS. SILICON
CARBIDE ARE STANDARD

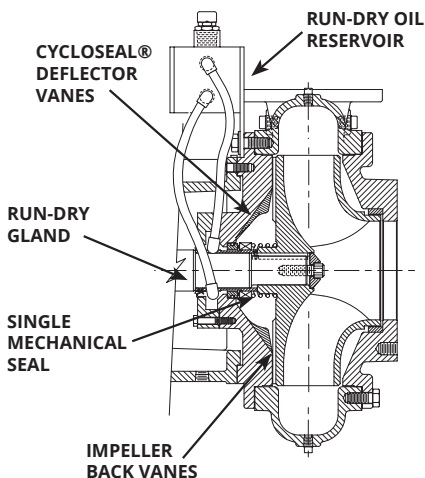
MX SERIES PUMPS - MINING

- DISCHARGE SIZES: 3", 4", 6" AND 8" AVAILABLE
- 600 - 800FT. TDH FLOWS TO 8000 GPM
- CA6NM IMPELLERS
- DUCTILE IRON CASE
- CORNELL PUMP QUALITY
- INDUSTRY LEADING EFFICIENCY
- 2 YEAR WARRANTY

CYCLOSEAL®

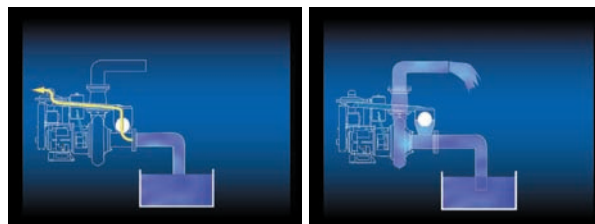


RUN-DRY® OPTION

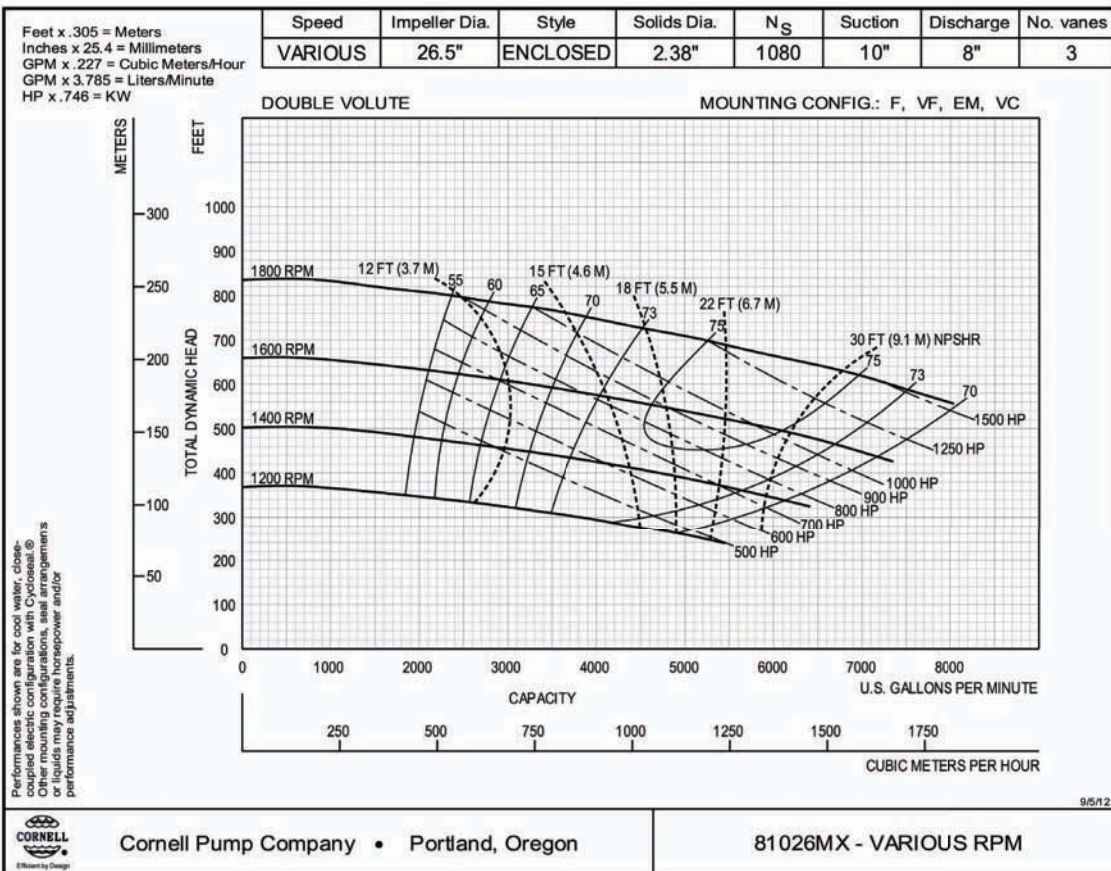


REDI-PRIME® SYSTEM

- Vacuum Assist (Diaphragm) Pump
- Patented Cycloseal® & Run-Dry™ features
- Fully automatic, compact, self-priming
- High Hydraulic Efficiencies



81026MX



NEW PAGE

81026MXVA



Cornell Pump Company • Portland, Oregon

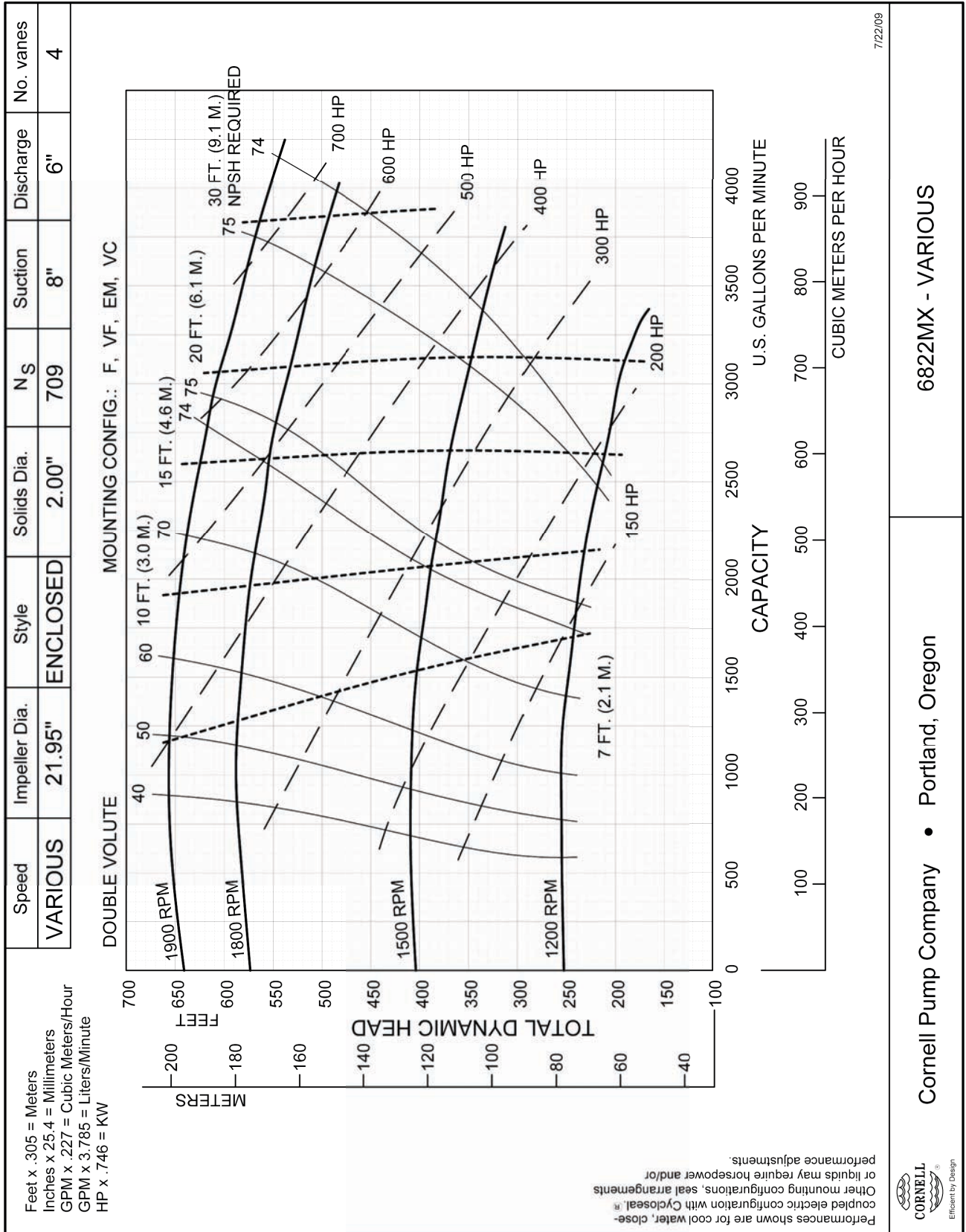
81026MX - VARIOUS RPM

MX SERIES PUMPS - MINING

6822MX

NEW PAGE

6822MXVA



7/22/09

Cornell Pump Company • Portland, Oregon

6822MX - VARIOUS

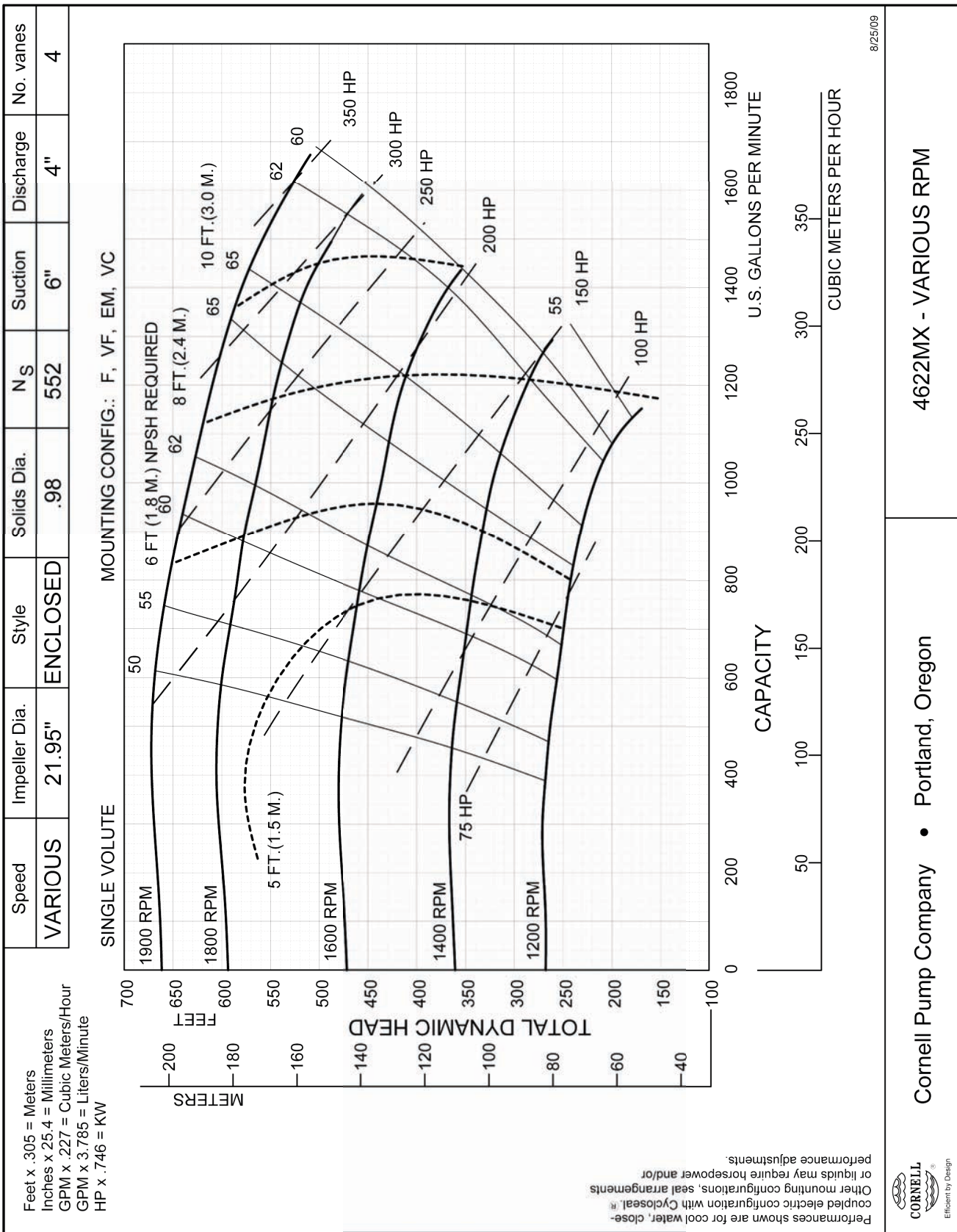


MX SERIES PUMPS - MINING

4622MX

SUPERSEDES 3/11/09

4622MXVA



Cornell Pump Company • Portland, Oregon

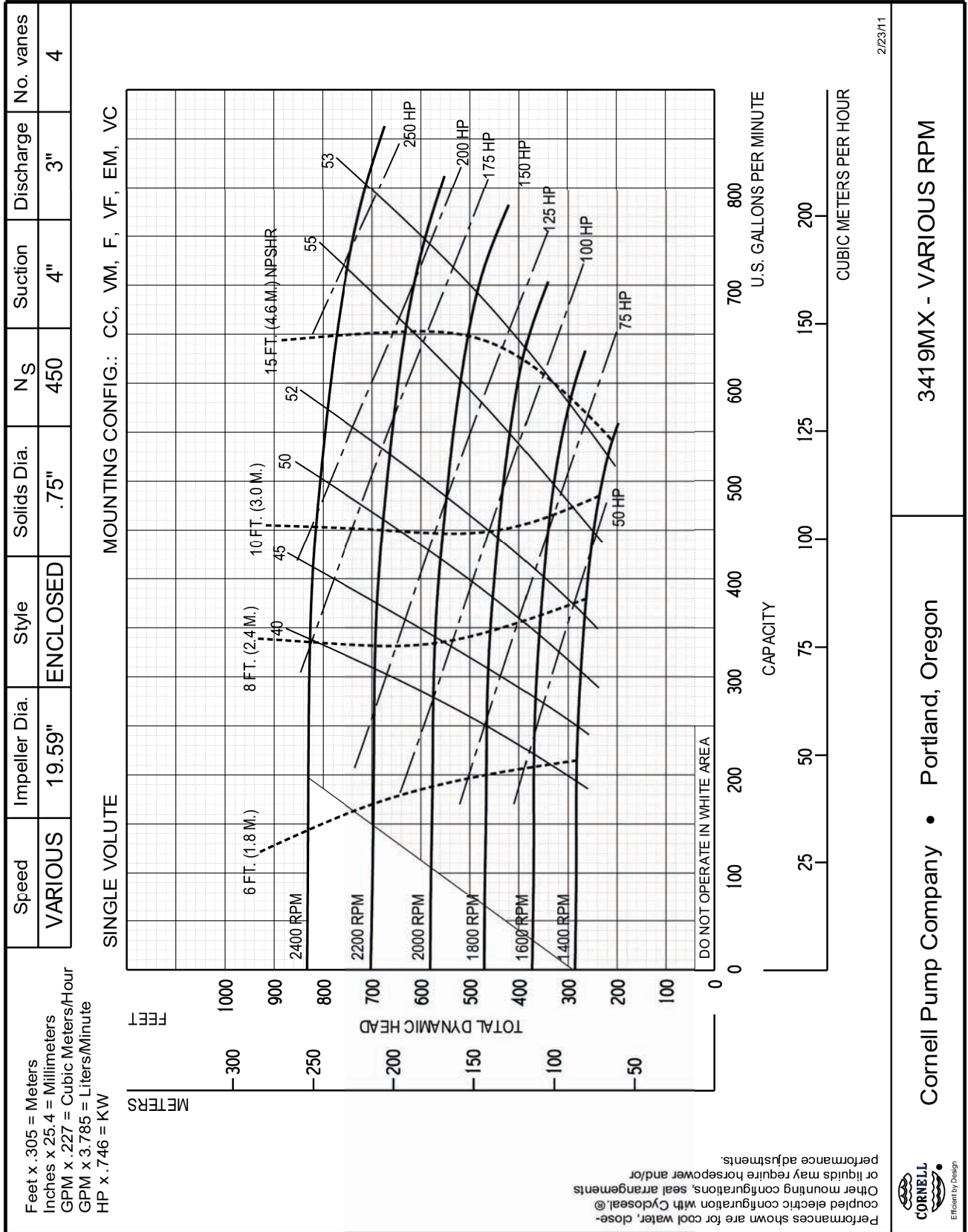
4622MX - VARIOUS RPM

MX SERIES PUMPS - MINING

3419MX

SUPERSEDES 6/03/09

3419MXVA



MX SERIES PUMPS - MINING

2415MX

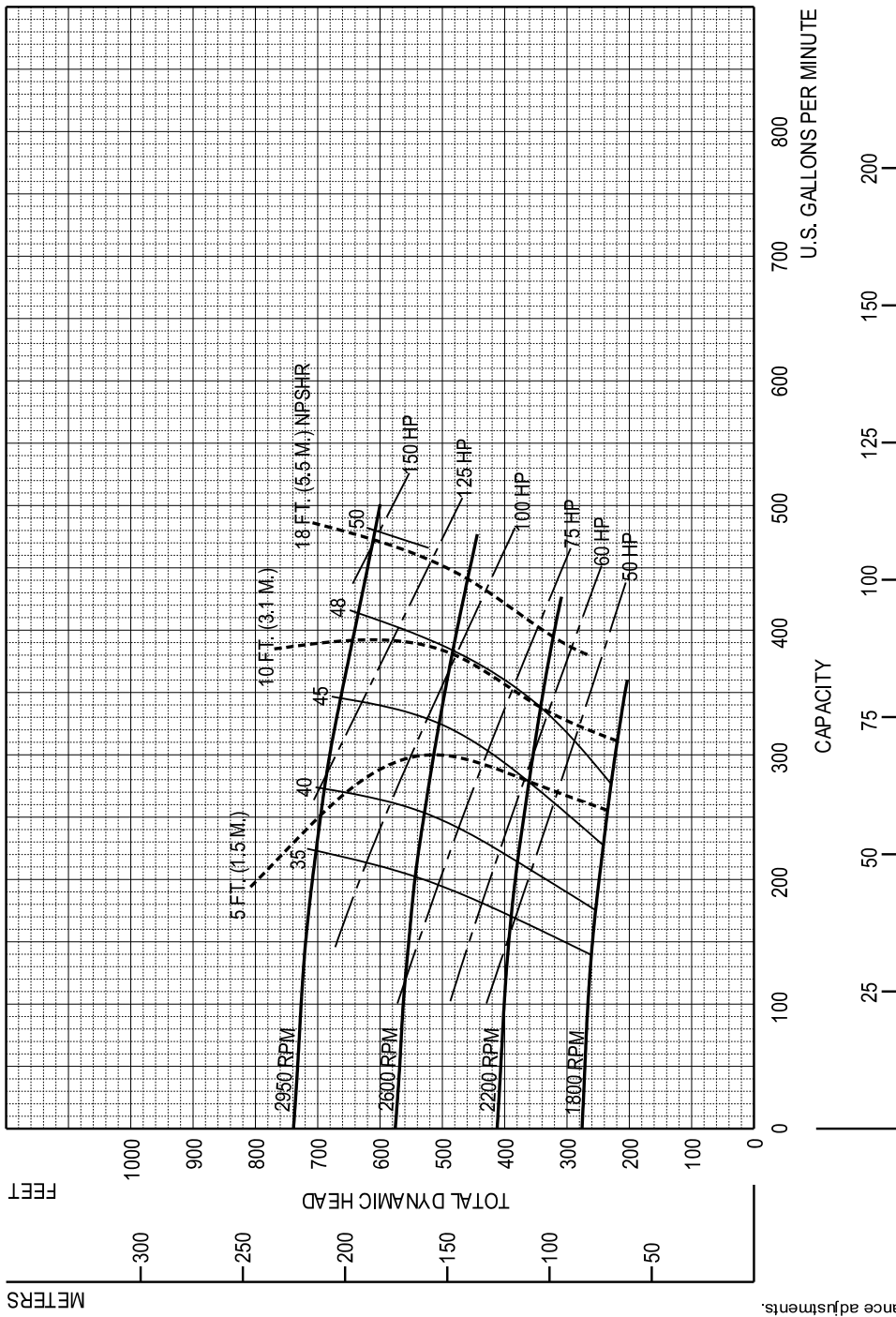
NEW PAGE

2415MXVA

Speed	Impeller Dia.	Style	Solids Dia.	N _S	Suction	Discharge	No. vanes
VARIOUS	15.22"	ENCLOSED	.62"	530	4"	2"	3

MOUNTING CONFIG.: F, VF, EM, VC

SINGLE VOLUTE



Feet x .305 = Meters
 Inches x 25.4 = Millimeters
 GPM x .227 = Cubic Meters/Hour
 GPM x 3.785 = Liters/Minute
 HP x .746 = KW

Performances shown are for cool water, close-coupled electric configuration with Cyclo Seal. Other mounting configurations, seal arrangements or liquids may require horsepower and/or performance adjustments.

6/8/11

Cornell Pump Company • Portland, Oregon

2415MX - VARIOUS RPM



MARKET AND PRODUCT LINE



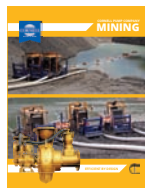
AGRICULTURAL



FOOD PROCESS



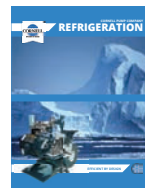
INDUSTRIAL



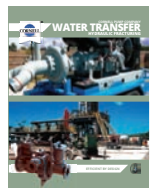
MINE DEWATERING



MUNICIPAL



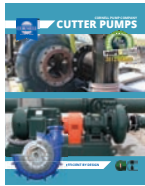
REFRIGERATION



WATER TRANSFER



CHOPPER



CUTTER



EDGE™



HYDRAULIC SUBS



HYDRO TURBINE



IMMERSIBLE



MANURE



MP SERIES



MX SERIES



OIL & GAS



REDI-PRIME®



STX SERIES



SLURRY



SUBMERSIBLE

Cycloseal®, and Redi-Prime® are Registered Trademarks of Cornell Pump Company.

Cornell pumps and products are the subject of one or more of the following U.S. and Foreign patents: 3,207,485; 3,282,226; 3,295,456; 3,301,191; 3,630,637; 3,663,117; 3,743,437; 4,335,886; 4,523,900; 5,489,187; 5,591,001; 6,074,554; 6,036,434; 6,079,958; 6,309,169; 2,320,742; 96/8140; 319,837; 918,534; 1,224,969; 2,232,735; 701,979 and are the subject of pending U.S. and Foreign Patent Applications.



Cornell Pump Company
 16261 SE 130th Ave
 Clackamas, OR 97015
 P: (503) 653-0330
 F: (503) 653-0338



CORNELLPUMP.COM
 ©2013 CORNELL PUMP COMPANY