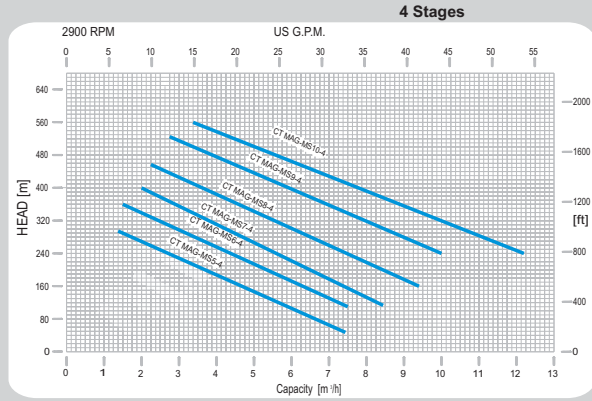
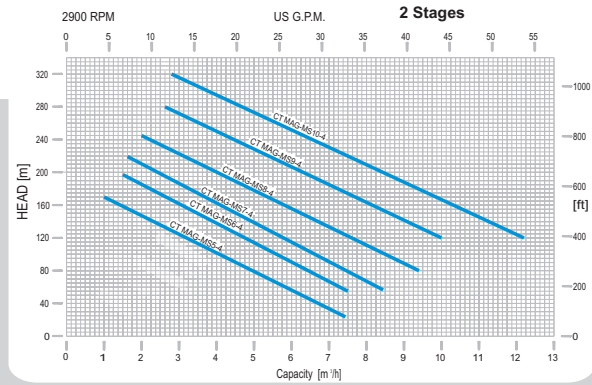


Pump construction

Close-coupled drivers are conventional drivers mounted directly to pumps frame. No base, coupling or guards are required for this mounting style.
 Connections:
 Flange rating per DIN Norms Class PN16-25-40.
 Flange rating per ANSI B16.5 Class 300.

Performance curves



Operating Limits

- Max viscosity 200cSt
- Max system pressure 50BAR (standard)
150BAR (HP Version)
Higher pressure version available on request.
- Flow up to 12mc/h
- Head up to 500 m
- Temperature range from -185 °F (-120°C) to +662 °F (+350°C)
- Electric motors from 0,55kW up to 75kW
- Available ATEX II - / 2G cbk II C T2-T5



CT MAG-MS

Special Peripheral Multistage Metallic Mag-Drive pumps



Manufactured by: 3MPUMPS s.r.l. Via dell'Artigianato, 120 - 45015 - Corbola (Ro) - Italy - www.3mpumps.com Tel.+39 0426346304 Fax.+39 0426349126



For more information please contact:

Printed 19/02/2010

CT MAG-MS Series

The separation of liquid chamber/atmosphere by means of an isolation shell is the best solution to pump aggressive, explosive and toxic liquids, hydrocarbons, heat transfer liquids and liquids difficult to seal.
 The hermetic sealless is the best solution for the chemical, pharmaceutical and petrochemical industry.
 A wide range of pumps covers the different performances.
 Low NPSH pumps (0,6m) are the perfect design for the refrigeration market.



Pump Details

"Barrel" construction, with back inserted volute rings, to have the best hydraulic alignment and the longest wear rings life. Available in 2 or 4 stages.

The hydraulic barrier between two stages is made of a special high pressure lip seal.

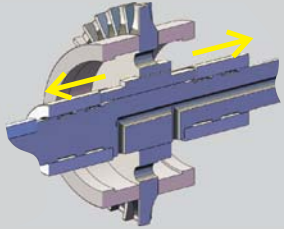
Epoxy primer and polyacrylic enamel water-based painting for the best quality resistance linked to the environmental respect.

The rear shell is made of one single piece, no welding, ellipsoidal profile that has been studied to withstand higher pressures than the traditional one.

Available two versions, AISI 316 the standard construction, and Hastelloy®-C276 for high pressure version - providing a safe and efficient solution - system pressure max 150BAR.

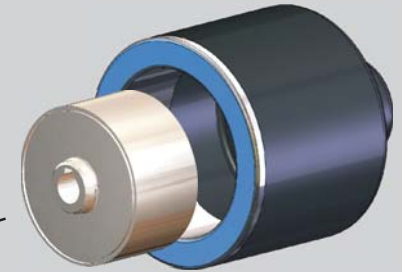
Titanium Alloy is an upgrade when higher pressure ratings and increased efficiency are required.

Particular design of the hydraulic, with self balancing impeller to improve the wear ring life.



The range includes the construction with two and four stages, with or without centrifugal inducer to minimize the required NPSH up to 0,6 m, to allow the pumping of condensates and generally all low available NPSH installations.

CF8M or WCB pump casing, cover & impellers High quality casting components. Other materials : Hastelloy C276, Incoloy825, Duplex, or others available on request.



High power synchronous magnetic coupling designed by our technical office and with rare earth magnetic elements mechanically locked.

The high performance magnets can be operated at liquid temperatures of up to 662°F (350 °C) without external cooling.

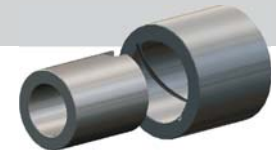
Drain plug (1/2"NPT)



RWP QUICK CHANGE CARTRIDGE KIT to guarantee an easy and fast maintenance.

Sealing system with flat gaskets prevents product from leaking to the atmosphere - different materials available:

- Asbestos free
- PTFE
- Graphoil
- Garlock-Ω
- Gylon-Ω



Field assembling of the product lubricated bearing arrangement does not require special tools.

The Bearing materials are available in four different types to provide the best solution for each application: Silicon Carbide (SSIC), Tungsten Carbide (TC), Carbon to allow a dry running situation and PTFEC/G for any applications where the Carbon cannot be used.

The adoption of elastic rings reduces the sleeve bearing loads and the thrust bearing loads to the minimum, to guarantee many years of maintenance-free operation.